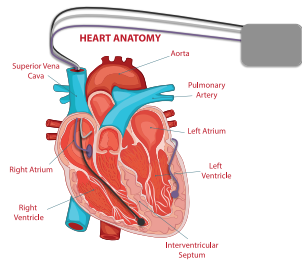


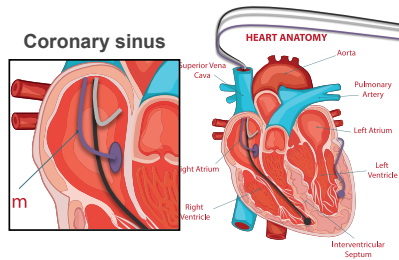


Biventricular pacing

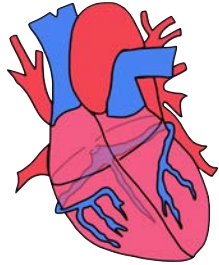
Positioning a left ventricular lead



Biventricular pacemaker

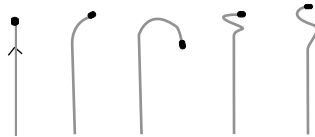


The solution

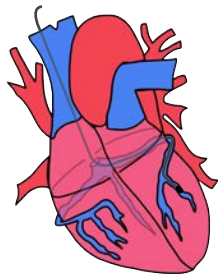


The coronary veins

Straight Single Bend Double Bend Corkscrew S-Shaped

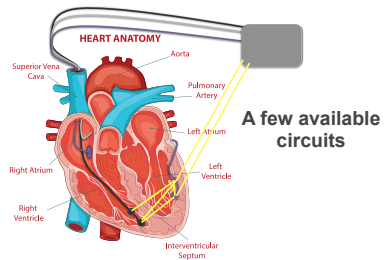


Fixing an LV lead



LV lead in place





Outside the heart?

Takeaway message



A left ventricular lead is positioned on the **outside wall** of the left ventricle. It is **wedged** into a coronary vein.
